

Visit www.lgfloors-usa.com | call 1.800.LGFL.USA

LG FLOORS

PRODUCT CATALOG

- NATURELIFE™
- DECO™ STONE
- DECO™ WOOD
- IMPRESSION™
- ARTWALK™
- STATICPULSE™

LG FLOORS



LG FLOORS

LG FLOORS™ is one of the world's largest resilient flooring manufacturers and has been producing quality products since 1961. Backed by an enormously popular brand name LG has been providing the North American marketplace with first-class flooring options for over 10 years.

Our parent company, LG Chem is one of the world's largest integrated conglomerate. Holding vast resources through out the materials supply channel, LG Floors is well equipped to satisfy the style, performance, and environmental needs of the U.S. market.

Possessing financial resources few can match, LG Floors continues to invest heavily in R&D, marketing, and customer services in order to provide total solutions to our partners around the world.

Our mission is to be the best flooring company in the world by consistently exceeding the needs and expectations of our valued customers.



YEOSU HWACHI COMPLEX- LG Floors Raw Material Plant in Korea

RESEARCH PARK - LG Floors R & D Facility in Korea





CHEONGJU - LG Floors Tile Plant in Korea

LG Floors' manufacturing factories are some of the world's most environmentally friendly, state-of-the-art facilities.

Our products are made with the highest quality materials available and guaranteed by our strict quality control standards.

Our dedication to excellence has earned LG Floors numerous international quality distinctions. Our flooring manufacturing plants are ISO-14001 and ISO-9001 certified for environmental and quality standards, respectively.

Our brand reputation, environmental stewardship, and commitment to excellence as a solutions partner ensures quality products and total customer satisfaction.

LG Floors' extensive collection of commercial flooring features sophisticated patterns and colors that are designed to coordinate with one another, and represent fresh concepts for intelligently defining space.

With LG Floors you will be able to elevate your full design potential to transform any space into a relaxing, comfortable atmosphere.

LG Floors means achieving what you desire.



ULSAN COMPLEX - LG Floors Sheet Plant in Korea





LEED SCORECARD - Contributing Points

Detailed LEED SCORECARD data is found in the "Construction" legend for each LG Floors' product section in this catalog.

LEED NC 2.2 & CI 2.0 Rating System

- MR 4.1 - Post Consumer 10%
(post-consumer + $\frac{1}{2}$ pre-consumer)
- MR 4.2 - Post Consumer 20%
(post-consumer + $\frac{1}{2}$ pre-consumer)
- EQ 4.1 - Adhesives and Sealants SCAQMD
Rule #1168
- EQ 4.3 - FloorScore Certification is now
recognized as a substitute
(established originally through a
CIR - Credit Interpretation Request)
- ID 1.1 - Green Housekeeping Innovation
Credit (inquire within) borrowing
from LEED EB IEQ 10.3

LEED EB 2.0 Rating System

- MR 2.1 - Optimize Use of Alternative Materials
- Post Consumer Recycled Content
- MR 3.1 - Optimize Use of IAQ Products,
A.) Adhesives & Sealants SCAQMD
Rule #1168
- MR 3.2 - Optimize Use of IAQ Products,
C.) FloorScore Certification in lieu of CRI
- MR 4 - Sustainable Cleaning Products and
Services
- IEQ 10.3 - Green Cleaning - Low Impact
Environmental Policy

**LEED Schools,
NC & Major Renovations Rating System**

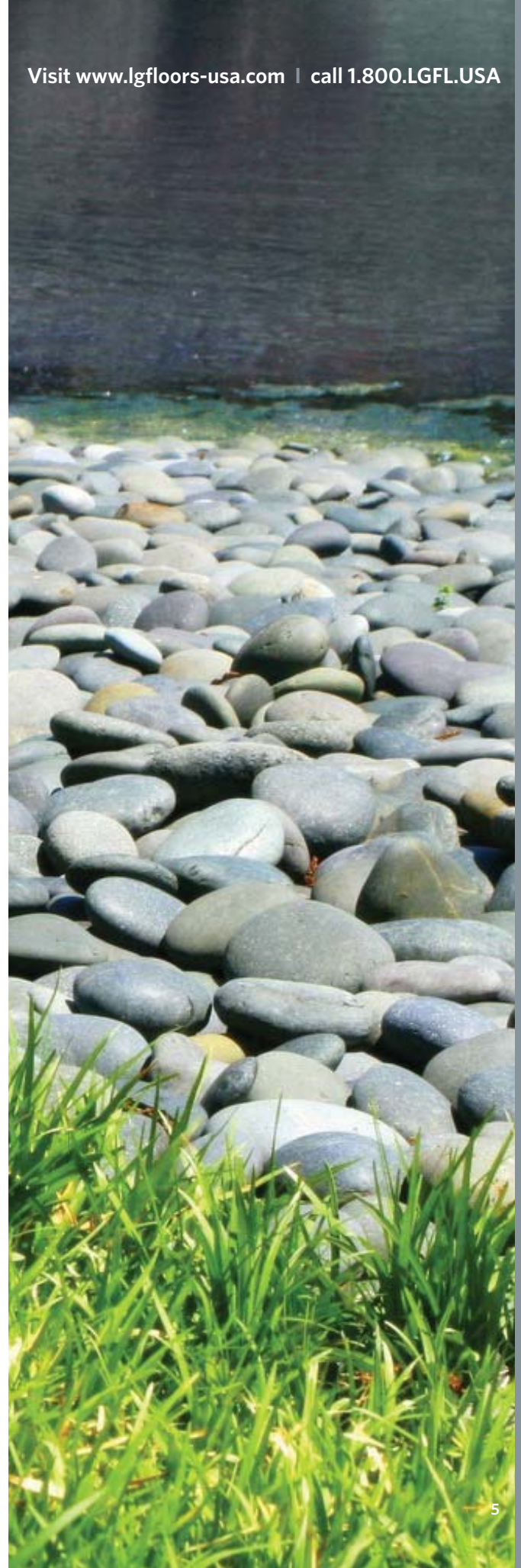
- MR 1.3 - Maintain 50% of Interior Non-Structural Elements
- MR 4.1 - Post Consumer 10%
(post-consumer + $\frac{1}{2}$ pre-consumer)
- MR 4.2 - Post Consumer 20%
(post-consumer + $\frac{1}{2}$ pre-consumer)
- EQ 4 - Option 1 - Adhesives and Sealants
SCAQMD Rule #1168
- IEQ 4 - Option 3 - Flooring Systems - CA 1350
- ID 1.1 - Green Housekeeping Innovation Credit
(inquire within) borrowing from LEED
EB IEQ 10.3

**LEED Retail - NC & Major Renovations
Rating System**

- MR 1.3 - Maintain 50% of Interior Non-Structural Elements
- MR 4.1 - Post Consumer 10%
(post-consumer + $\frac{1}{2}$ pre-consumer)
- MR 4.2 - Post Consumer 20%
(post-consumer + $\frac{1}{2}$ pre-consumer)
- IEQ 4 - Option 1 Adhesives and Sealants
SCAQMD Rule #1168
- IEQ 4 - Option 3 Flooring
- FloorScore Certified
- ID 1.1 - Green Housekeeping Innovation Credit
(inquire within) borrowing from LEED
EB IEQ 10.3

Other environmental attributes:

- ISO 14001 - Environmental Manufacturing Standard
- LG Corporate Responsible Care Initiative,
Read about it
- Post Consumer - Innovative Reclamation Program





Recycling Program

LG Floors is taking resilient floor manufacturing and environmental stewardship to the next level using state-of-the-art technology and innovative programs.

In the past resilient flooring manufacturers have been plagued by the fact that their products, because of application and installation, were limited in afterlife recyclability and reuse.

However, the fact remains that, when a resilient floor is glued down to a substrate, the adhesive cannot be removed afterward, making resilient flooring unusable in its afterlife.

We needed to find another way.

Industry Confusion

In addition to this dilemma, a true source of recycled material has never been easy to find. Currently, many manufacturers reuse their own scrap back into the product. But, according to the ISO references in the LEED rating system, this doesn't qualify as post-industrial content. Many manufacturers are unaware of this definition and still promote their material as containing post-industrial material.

This mis-classification has led to a great deal of confusion for specifiers and end users. But thanks to its commitment to find a way to make recycling resilient flooring a reality, LG Floors has found the solution.

New Developments

LG has discovered several ways to not only incorporate true post-industrial content into its product but, for the first time in the industry, LG is able to incorporate its own post-consumer recycled content into resilient floor covering.

Post-consumer recycled content is viewed as the most coveted because it involves reclaiming material after it has been used by the end user.

LG has developed a way of incorporating post - industrial and post-consumer content by creating a new program. LG is domestically reclaiming its own product (as well as the competition's material) from individual households and end users and reusing it to make floors again. This is the closest any resilient flooring maker has come to a closed loop manufacturing process.

This kind of recycled content is more difficult to acquire, because it tends to be sporadically available and its reclamation is difficult. Unlike post-industrial material available in great quantity through factories, post-consumer material is spread out among many households.

There are other environmental benefits that are gained by using LG flooring: indoor environmental quality, compliant adhesives and sealants, green cleaning and maintenance and much more.

Please see LG Floors LEED SCORECARD data for further information.

LG Floors Recycled Contents

	Total
NATURELIFE™	20 %
ARTWALK™	29 %
DECO™ WOOD	16 %
DECO™ STONE	16 %





LG FLOORS™ PRODUCTS
Technology | Design | Sophistication

Life in nature

LG FLOORS™ is proud to introduce its new North America collection of resilient flooring, featuring an exciting variety of choices for all commercial market segments.

LG FLOORS™ offers environmentally preferred products designed specifically for North America interiors.

Inspired by nature, our luxurious wood and stone visuals utilize cutting edge imaging technology and state-of-the-art manufacturing processes to create floors that look and feel like the real thing.

Let LG FLOORS™ bring your space to life today!

The natural look and feeling of organic materials with a bias toward comfort, health, and design.

A true sense of nature, as if you are walking on native stones.

A wood visual so real that you will have a difficult time telling it apart from the real thing.

Time-honored neutrals and trendy, saturated accents will excite your passion for design!

A functional, high-tech, industrial metal deck pattern with realistic surface textures.

Electro Static Discharge (ESD) Tile designed for electronic manufacturing environments and areas where static control is desired.

LG FLOORS

CONTENTS

• NATURELIFE™	8
• DECO™ STONE	14
• DECO™ WOOD	22
• IMPRESSION™	28
• ARTWALK™	34
• STATICPULSE™	38

**LG FLOORS
Resilient Flooring Adhesives 44**

**LG FLOORS
Product Data Sheet 46**

LG FLOORS Fast Facts 48

**LG FLOORS
Commercial Floor Warranty 50**

**LG FLOORS STATICPULSE™
ESD Tile Warranty 51**



NATURELIFE™
Commercial Resilient Sheet

Realistic | Textures Patterns Visuals

NATURELIFE™ is a durable, true-to-life heterogeneous commercial sheet flooring able to withstand heavy traffic, making it the perfect floor for hospital and healthcare settings as well as hospitality and government facilities.

Utilizing some of LG's most advanced innovations, NATURELIFE™ recreates the texture, appearance, and warmth of real hardwood and organic floors. Featuring our exclusive "Embossed in Register (EIR)" surfacing technology NATURELIFE™ is like no other resilient sheet floor. It looks and feels like the real thing!

Let your design imagination run free with NATURELIFE™. Arrange different colors, a tone-on-tone fashion, or design custom artwork, insets, and borders which can be precision cut and installed as an integral part of the floor.

Its advanced anti-microbial and anti-fungal properties, combined with the seamless benefit of a heterogeneous floor, NATURELIFE™ is an ideal selection for the most demanding healthcare applications.

When it comes to maintenance, NATURELIFE™'s durable "matte finish" polyurethane surface makes cleaning a breeze as it is highly resistant to scuffing and staining.

NATURELIFE™'s forgiving nature makes it one product installers love. Not only is it easy to handle, but makes for easy heat-welding and flash-coving.

Featuring a minimum of 20% post-consumer recycled content and FloorScore™ IAQ Certification. NATURELIFE™ is a great addition to any LEED- or eco-oriented project.

Advanced anti-microbial and anti-fungal properties make NATURELIFE™ an ideal selection for healthcare applications. NATURELIFE™ is easy to maintain and offers high resistance to scuffing and staining due to its durable "matte finish" polyurethane surface.





Healthcare



Hospitality



Government

NATURELIFE™

Commercial Resilient Sheet

- **Designed in America** to meet the styling requirements of today's busy designers.
- Colors coordinate with the full collection of LG Floors' tile and sheet products
- Hi-res digital imaging produces realistic visuals with outstanding depth-of-field.
- Wood patterns represent their authentic natural species for precise design value.
- Exclusive "Embossed in Register (EIR)", surface design with outstanding realism and rich textures, like those found in today's real wood floors.
- Anti-bacterial and anti fungal properties make NATURELIFE™ ideal for healthcare applications.
- High-performance commercial construction for areas with heavy traffic and rolling loads. Suitable for use under hospital beds.
- Manufactured with a minimum of 20% post-consumer recycled content obtained through LG Floors' exclusive program to collect used resilient floors.
- FloorScore™ certified for Indoor Air Quality (IAQ) by SCS Labs.
- Adds excellent value to a LEED scorecard.
- Durable "matte finish" polyurethane surface offers easy maintenance and substantial lifecycle cost savings.



LG FLOORS





NLA7713 JAPANESE OAK - YELLOW



ZELKOVA



NLA7720 JAPANESE OAK - GREEN



NLA7481 SCANDINAVIAN OAK



OAK

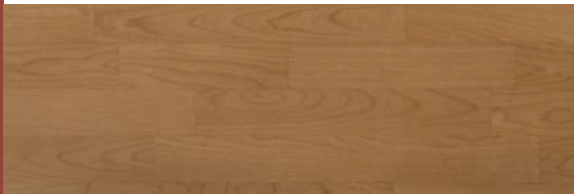


NLA8343 HONDURAN CHERRY

CHERRY



NLA8126 AMERICAN OAK



NLA5305 GOLDEN CHERRY **NEW**



NLA8127 NATURAL OAK



NLA5301 TRADITIONAL CHERRY



NLA5257 AGED OAK **NEW**



NLA5303 AMERICAN CHERRY



NLA5255 CHOCOLATE OAK



NLA5306 BRAZILIAN CHERRY **NEW**



NLA5256 DARK OAK **NEW**



NLA7716 CHOCOLATE CHERRY **NEW**



NLA9553 **BAMBOO-CHOCOLATE** **NEW**



NLA9552 **BAMBOO-COFFEE** **NEW**



NLA9551 **BAMBOO-NATURAL** **NEW**



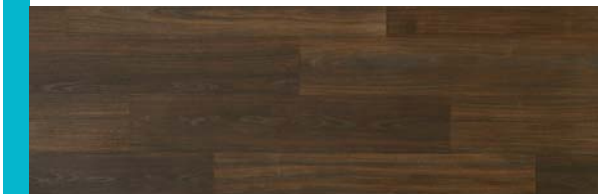
BAMBOO



NLA9446 **ANTIQUE MAHOGANY** **NEW**



NLA9571 **AMERICAN WALNUT** **NEW**



NLA9561 **ROSEWOOD** **NEW**



NLA8265 **TEAK**



NLA8311 **APPLE**



NLA5304 **LIGHT MAPLE**

NATURAL SPECIES



RUSTIC

NLA0011 GREENWICH PINE



NLA0012 MYSTIC PINE



NLA0013 STAMFORD



NLA0021 ROXBURY PINE



NLA0022 WESTON PINE



NLA0031 PHOENIX PAULOWNIA



NLA0032 TEMPLE PAULOWNIA

ORGANIC



NLA9541 PUMICE **NEW**



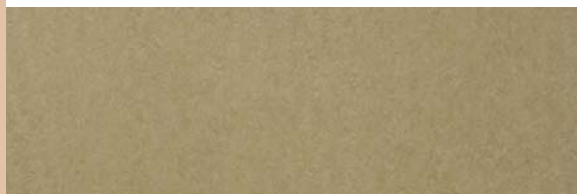
NLA7311 SIERRA



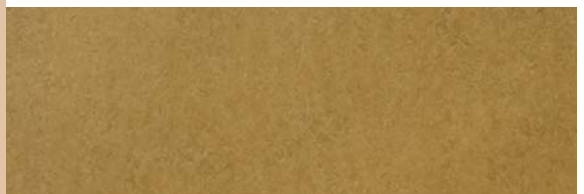
NLA7312 SEDONA



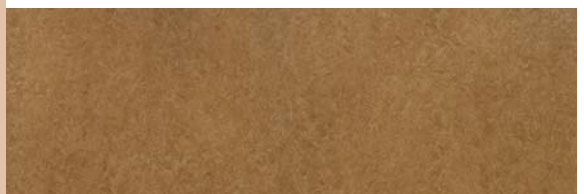
NLA7314-21 SAGE **NEW**



NLA7315-21 SANORAN **NEW**



NLA7316-21 SANDALWOOD **NEW**



NLA7317-21 SALINAS **NEW**

ORGANIC



NLA7318-21 **SAN JUAN NEW**



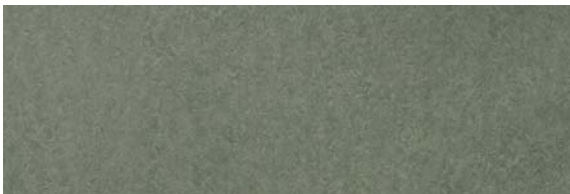
NLA7319-21 **RIVER ROCK NEW**



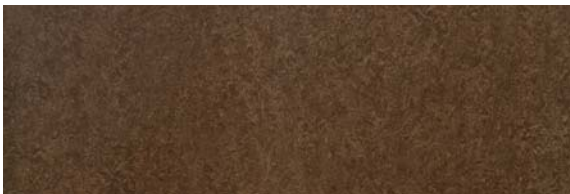
NLA7320-21 **BLUESTONE NEW**



NLA7321-21 **AMETHYST SMOKE NEW**

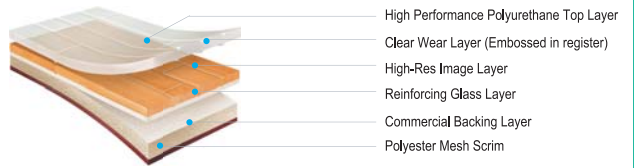


NLA7322-21 **CASCADE NEW**



NLA7323-21 **SEQUOIA NEW**

• Construction



• Product Specifications

• Reference Specification	
ASTM 1303-04	Type I, Grade 1
• Physical Data	
Roll Size	Nominal: 72 inch width X 25yd long rolls (50 SY/Roll) Actual: 1.83m width X 22.86m long rolls
Weight	5.55 lbs./yd ² (2.99kg/m ²)
Backing Class	4-ply fused backing system that includes 1.7mm PVC internal layer and polyester mesh backing - Class A
• Physical Characteristics	
ASTM F386 - Total Thickness	0.086 (2.2mm)
ASTM F410 - Wear Layer Thickness	0.02 (0.5mm)
ASTM D2047 - Slip Resistance	Exceeds the recommendations of OSHA and the ADA
ASTM 970 - Residual Indentation	Passes
ASTM F137 - Flexibility	Passes
ASTM F1514 - Resistance to Heat	Passes
ASTM F1514 - Resistance to Light	Passes
ASTM F 925 - Resistance to Chemicals	Passes
ASTM G21 - Resistance to Fungi	Rate "0" *Rate 0: Fungi free
AATCC 147 - Antibacterial Activity	Resist the propagation of bacteria
• Fire Test Data	
ASTM E 648 Critical Radiant Flux:	> 0.45 watts / cm ² , NFPA Class I
ASTM E662 Smoke Density	< 450 - Passes

• Environmental Data

Recycled Content	20% Post Consumer 0.0% Post Industrial
Indoor Air Quality	FLOORSCORE™ Certified
LEED Scorecard	NATURELIFE™ will contribute value to a building's LEED Scorecard in the following categories recognized by the USGBC: - LEED NC 2.2 & CI 2.0 Rating System - LEED EB 2.0 Rating System - LEED Schools, NC & Major Renovations Rating System - LEED Retail - NC & Major Renovations Rating System - DRAFT You may obtain further information about LG Floors LEED rating values by visiting www.lgfloors-usa.com
Other environmental attributes	ISO 14001 - Environmental Manufacturing Standard LG Chem Responsible Care - Global Commitment and Initiative Innovative Post Consumer Recycling Program - Resilient Sheet Flooring



DECO™ STONE
Luxury Vinyl Tile (LVT)

Distinctive Designs

Natural Visuals

Excellent Design Values

DECO™ STONE creates distinctive flooring designs with the realistic look of natural materials.

Cutting-edge, high-res digital imaging technology allows for precise, life-like replicas of natural stone including limestone, sandstone, granite and other traditional stones.

DECO™STONE presents the appearance of natural stone combined with the durability and cost-effectiveness of Luxury Vinyl Tile.

Our new, abstract designs offer unique color and contrast, complement the beauty of the natural elements designed into each floor tile. A durable polyurethane surface means more than just easy maintenance, it allows DECO™STONE to withstand the rigors of heavy commercial foot traffic. LG's precise engineering and dedication to quality makes DECO™STONE LVT one of the easiest floors to install and maintain.



Retail



Healthcare

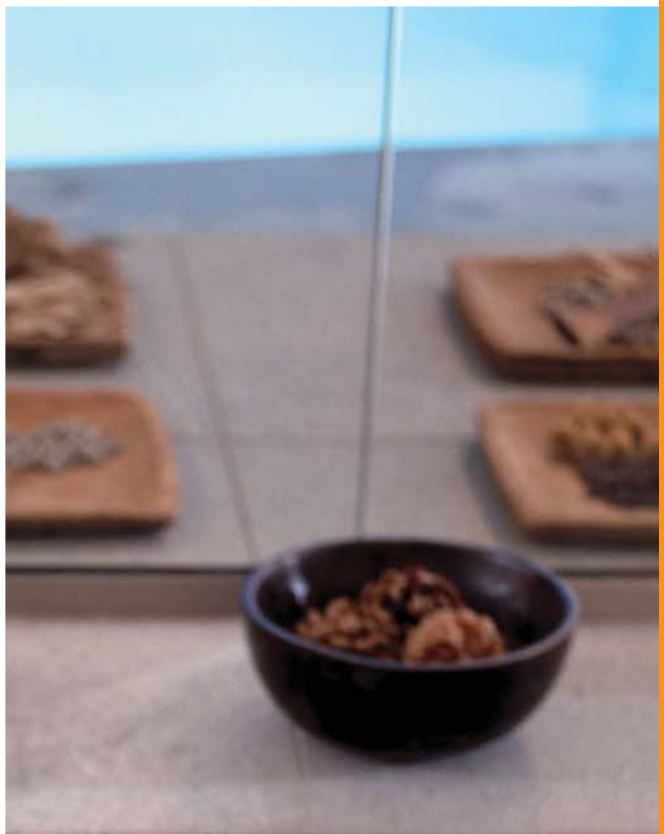


Hospitality

DECO™ STONE

Luxury Vinyl Tile (LVT)

- **Designed in America** to meet the styling requirements of today's busy designers.
- Colors coordinate with the full collection of LG Floors' tile and sheet products
- Hi-res digital imaging produces realistic visuals with outstanding depth-of-field.
- Distinctive organic and abstract images offer excellent design value.
- Manufactured with 16% recycled content.
- FloorScore™ certified Indoor Air Quality by SCS Labs. (CA CHPS #1350)
- Adds excellent value to a LEED scorecard.
- High-performance commercial construction for areas with high traffic, rolling loads.
- Applications include retail stores, hospitals, hotels, offices and any space where high durability and the look of natural stone or abstract patterning is desired.
- Durable "matte finish" polyurethane surface offers easy maintenance and substantial lifecycle cost savings.



LG FLOORS





GRAPHIC



DTP2943 **NEW**



DTP2946 **NEW**



DTP2945 **NEW**

ORBIT



DTP5942



DTP5941



DTP5945



DTP5946

LIMESTONE



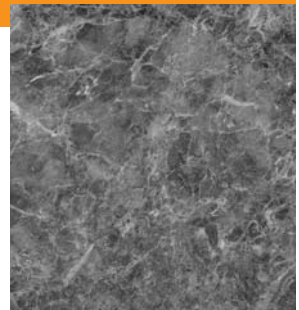
DTP2241 **NEW**



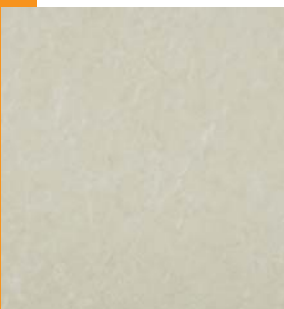
DTP2242 **NEW**



DTP2244 **NEW**



DTP2230 **NEW**



DTP2250 **NEW**



DTP2255 **NEW**



DTP2251 **NEW**



DTP2252 **NEW**

CARPET



DTP2811 **NEW**



DTP2808 **NEW**

POSITANO



DTP2253 **NEW**



DTP2254 **NEW**

MOJAVE

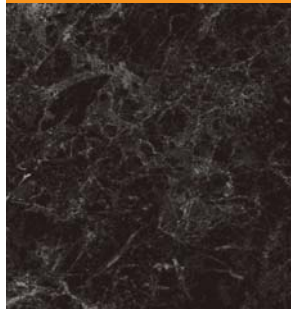


DTP2437



DTP2439

ROMA



DTP7312



DTP5132





CRETE



DTP5931



DTP5924



DTP5930



DTP5925



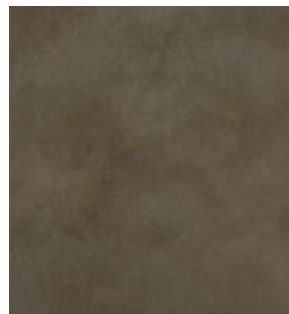
DTP5928



DTP5927



DTP5932



DTP5926



DTP5929

DUNEE



DTP5951



DTP5952



DTP5953



DTP5955

METAMORPHOSIS



DTP5384



DTP5386



DTP5381



DTP5382



DTP5385



DTP5383

HARDROCK



DTP5346



DTP5343



DTP5347



DTP5344



OUTBACK



DTP5913



DTP5906

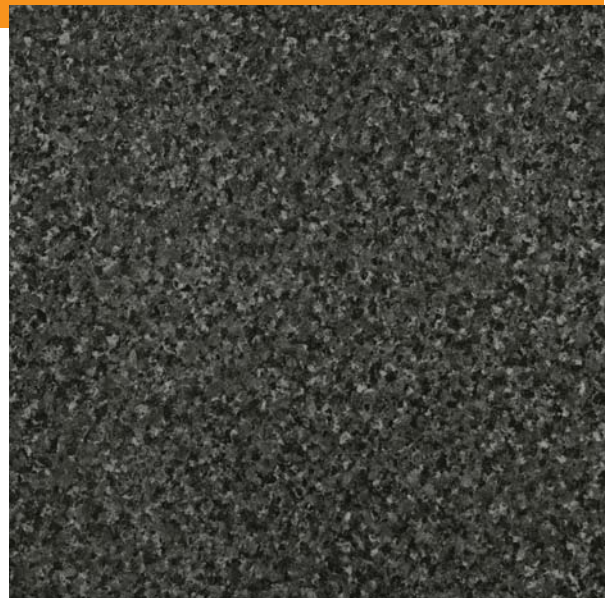
RUSHMORE



DTP2107



DTP2102

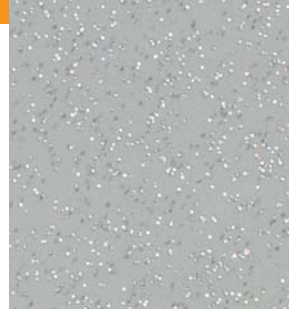


DTP2110

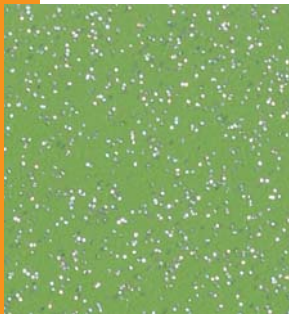
HOLOGRAM



DTP7201 **NEW**



DTP7202 **NEW**



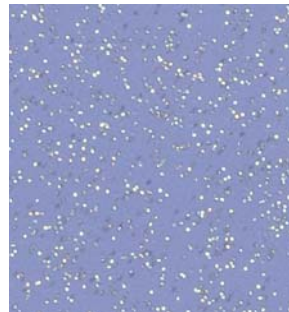
DTP7203 **NEW**



DTP7204 **NEW**



DTP7205 **NEW**



DTP7206 **NEW**

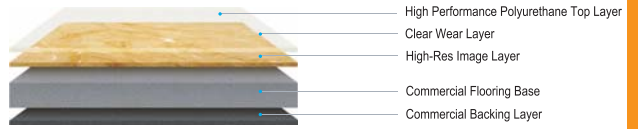


DTP7207 **NEW**



DTP7208 **NEW**

• Construction



• Product Specifications

• Reference Specification	
ASTM F 1700	Class III Printed Film Vinyl Tile Type A: Smooth Surface Type B: Embossed Surface
• Physical Data	
ASTM F 536 - Size	(Nominal 18" X 18") 17.72in. X 17.72 in. (450mm X 450mm)
ASTM F 386 - Overall Thickness	0.125 in. (3.0mm)
ASTM F 410 - Wear Layer Thickness	0.020 in. (0.5mm)
ASTM D 2047 - Slip Resistance	Exceeds ADA and OSHA recommendations
ASTM F 970 - Residual Indentation	Passes
ASTM F 137 - Flexibility	Passes
ASTM F1514 - Resistance to Heat	Passes
ASTM F1515 - Resistance to Light	Passes
ASTM F 925 - Resistance to Chemicals	Passes
• Fire Test Data	
ASTM E 648 Critical Radiant Flux	> 0.45 watts / cm ² ; NFPA Class I
ASTM E 662 Smoke Generation	< 450 - Passes

• Environmental Data

Recycled Content	4% Post Consumer 12% Post Industrial
Indoor Air Quality	FLOORSCORE™ Certified
LEED Scorecard	DECO™ will contribute value to a building's LEED Scorecard in the following categories recognized by the USGBC: - LEED NC 2.2 & CI 2.0 Rating System - LEED EB 2.0 Rating System - LEED Schools, NC & Major Renovations Rating System - LEED Retail - NC & Major Renovations Rating System - DRAFT You may obtain further information about LG Floors LEED rating values by visiting www.lgfloors-usa.com
Other environmental attributes	ISO 14001 - Environmental Manufacturing Standard LG Chem Responsible Care - Global Commitment and Initiative Innovative Post Consumer Recycling Program - Resilient Sheet Flooring Printed on Recycled Paper





DECO™ WOOD
Luxury Vinyl Tile (LVT)



Distinctive Designs Natural Visuals Excellent Design Values

DECO™ WOOD combines beautiful life-like wood plank visuals and a light-to-dark balanced color palette with purpose and economy.

Cutting-edge, high-res digital imaging technology allows for precise, life-like replicas of domestic and exotic wood species. From traditional American Red Oak to Ironwood and African Walnut each image is printed to scale making it impossible to tell the difference between the real thing.

DECO™ WOOD LVT offers distinctive wood plank designs with the realistic look of natural materials at a fraction of the cost of real wood.

DECO™ WOOD's durable, easy-to-maintain "matte finish" polyurethane surface is designed to withstand the demands of commercial foot traffic. This makes it ideal for a variety of public settings including retail, healthcare, and hospitality.



Retail



Healthcare



Hospitality

DECO™ WOOD

Luxury Vinyl Tile (L V T)

- **Designed in America** to meet the styling requirements of today's busy designers.
- Colors coordinate with the full collection of LG Floors' tile and sheet products
- Hi-res digital imaging produces realistic visuals with outstanding depth-of-field.
- Distinctive wood patterns represent their authentic natural species.
- Square-edge design enhances long-term appearance and resists the collection of soil and infectious contaminants.
- FloorScore™ certified for Indoor Air Quality by SCS Labs.
- Adds excellent value to a LEED scorecard.
- High-performance commercial construction for areas with high traffic, rolling loads.
- Applications include retail stores, hospitals, hotels, offices and any space where the look of natural wood plank is desired.
- Durable "matte finish" polyurethane surface layer offers easy maintenance and substantial lifecycle cost savings.



LG FLOORS





NATURAL WOOD



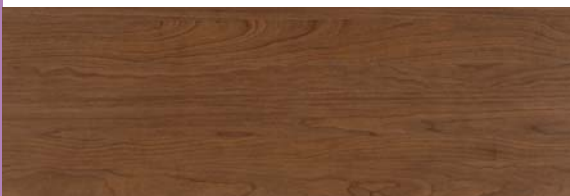
DPW2548 **BURNT CHERRY**



DPW2573 **CHOCOLATE CHERRY NEW**



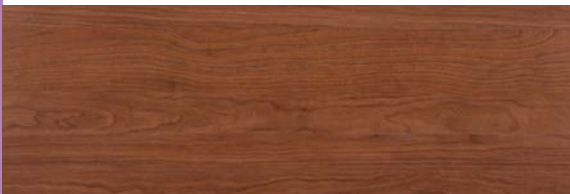
DPW5513 **AFRICAN WALNUT**



DPW2571 **CIKEL CHERRY NEW**



DPW2534 **BRAZILIAN CHERRY**



DPW2572 **ASIAN MAHOGANY NEW**



DPW2510 **ROSEWOOD**



DPW2543 **NATURAL CHERRY**



DPW2539 **IRONWOOD-RUBY**



DPW2544 **TEAK-GREEN**



DPW2530 **TEAK-LIGHT NEW**

NATURAL WOOD



DPW2547 **AMERICAN RED OAK**



DPW5503 **JAPANESE OAK - GREEN**



DPW5509 **BIRCH - YELLOW**



DPW2503 **JAPANESE OAK - AMBER**



DPW2506 **WHITE OAK NEW**



DPW2502 **JAPANESE OAK - YELLOW**



DPW2701 **BAMBOO - NATURAL NEW**



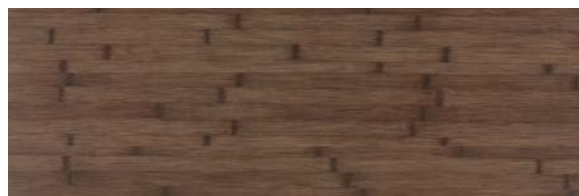
DPW4124 **LIGHT MAPLE**



DPW2703 **BAMBOO - CHOCOLATE NEW**



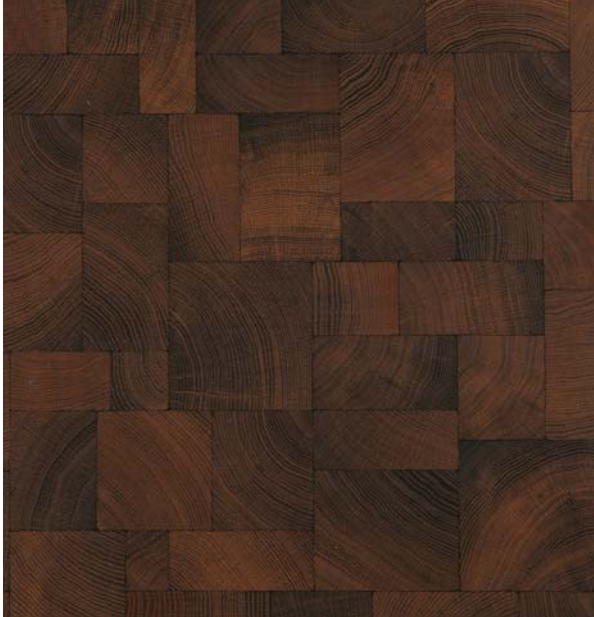
DPW2501 **MAPLE NEW**



DPW2702 **BAMBOO - COFFEE NEW**



ENDGRAIN 17.72" X 17.72"



DTP2951 COCO

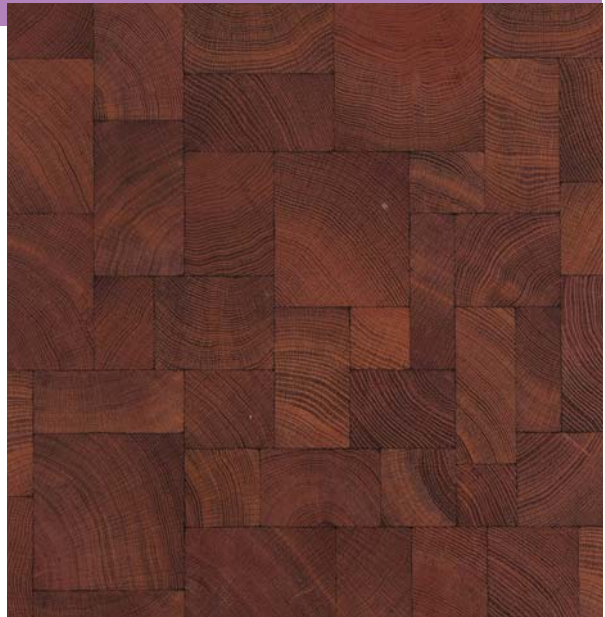


DTP2954 CARAMEL

ENDGRAIN 17.72" X 17.72"



DTP2955 WHITE CHOCOLATE



DTP2956 CHERRY



• Construction



• Product Specifications

• Reference Specification

ASTM F 1700	Class III Printed Film Vinyl Tile Type A: Smooth Surface Type B: Embossed Surface
-------------	---

• Physical Data

ASTM F 536 - Size	Wood-(Nominal 4" X 36") 3.94in X 36.22in (100mm X 920mm)
ASTM F 386 - Overall Thickness	0.125 in. (3.0mm)
ASTM F 410 - Wear Layer Thickness	0.020 in. (0.5mm)
ASTM D 2047 - Slip Resistance	Exceeds ADA and OSHA recommendations
ASTM F 970 - Residual Indentation	Passes
ASTM F 137 - Flexibility	Passes
ASTM F1514 - Resistance to Heat	Passes
ASTM F1515 - Resistance to Light	Passes
ASTM F 925 - Resistance to Chemicals	Passes

• Fire Test Data

ASTM E 648 Critical Radiant Flux	Exceeds 0.45 watts / cm ² , NFPA Class I
ASTM E 662 Smoke Generation	< 450 - Passes

• Environmental Data

Recycled Content	4% Post Consumer 12% Post Industrial
Indoor Air Quality	FLOORSORE™ Certified
LEED Scorecard	DECO™ will contribute value to a building's LEED Scorecard in the following categories recognized by the USGBC: - LEED NC 2.2 & CI 2.0 Rating System - LEED EB 2.0 Rating System - LEED Schools, NC & Major Renovations Rating System - LEED Retail - NC & Major Renovations Rating System - DRAFT You may obtain further information about LG Floors LEED rating values by visiting www.lgfloors-usa.com
Other environmental attributes	ISO 14001 - Environmental Manufacturing Standard LG Chem Responsible Care - Global Commitment and Initiative Innovative Post Consumer Recycling Program - Resilient Sheet Flooring Printed on Recycled Paper



IMPRESSION™
Commercial Homogeneous Tile

Old World Pattern Vibrant Color Passionate Design

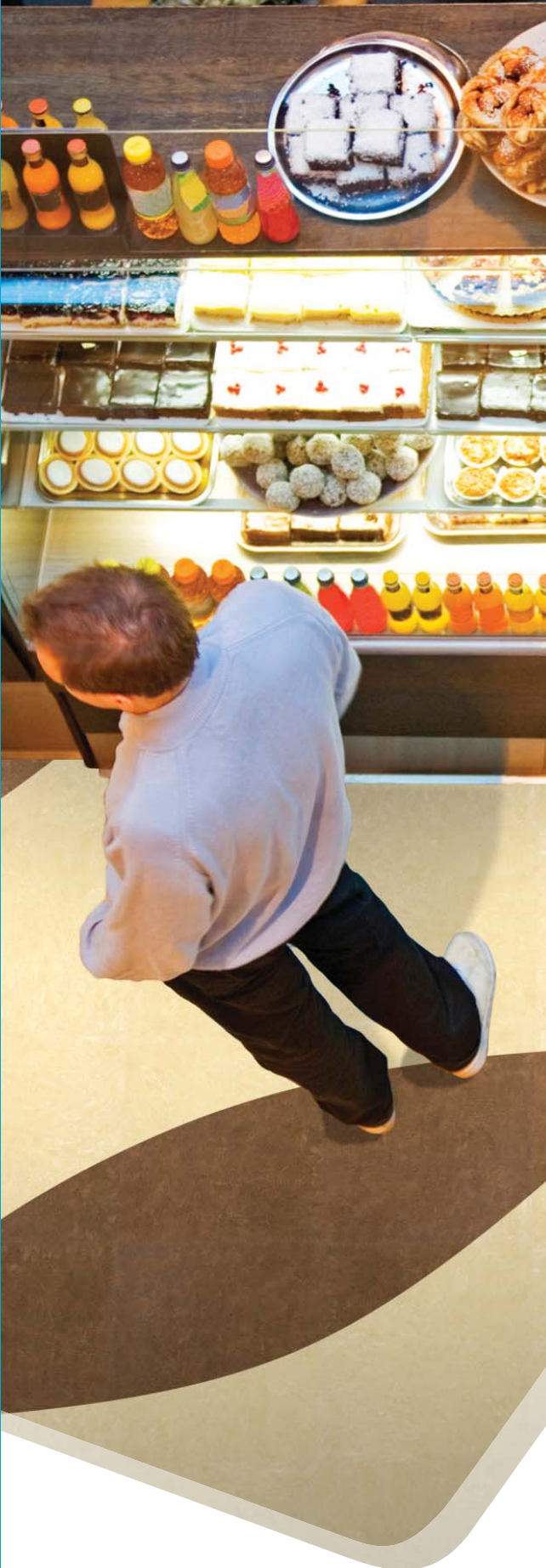
IMPRESSION™ Commercial Homogeneous Tile flooring combines Old World style with the most advanced resilient tile manufacturing technology available.

IMPRESSION™ satisfies design needs for a wide range of commercial interiors, including retail, healthcare, and education. A cutting-edge palette of 31 high energy colors will wake up anyone's passion for design.

IMPRESSION™, available in (nominal) 18" homogeneous, thru-color tiles, is very easy to install and maintain. Tiles can be installed in a uniform direction, on a diagonal or quarter-turned allowing for thousands of design possibilities.

The oversized format also allows for greater design flexibility. Arrange different color tiles in a checkerboard fashion or design custom artwork, insets or logos that can be precision cut and installed as an integral part of the floor.

IMPRESSION™ is dimensionally stable, durable and will stand up to heavy commercial foot traffic.





Education



Retail



Healthcare

IMPRESSION™

Commercial Homogeneous Tile

- **Designed in America** to meet the color requirements of busy designers!
- 31 cutting-edge colors coordinating with the full collection of LG Floors products.
- Time-honored neutrals and trendy, saturated accents will excite your passion for design!
- Distinctive Old World pattering offers superior design value!
- Oversized tiles, 17.75" x 17.75", (450mm x 450mm), enable increased design flexibility!
- Enhanced Vinyl Tile (EVT), manufactured in a 3mm gauge with high vinyl content for superior performance and easy maintenance.
- Micro-squared edges make for tight seaming for a monolithic appearance.
- FloorScore™ certified for Indoor Air Quality by SCS Labs.
- Adds excellent value to a LEED scorecard.
- High-performance commercial construction for areas with high traffic, rolling loads.
- Applications include retail stores, healthcare, education and any space where high performance, vibrant color and flexible design elements are desired.



LG FLOORS





IMP0204 **RUSSETT**



IMP0207 **UMBER**



IMP0210 **EBONY**



IMP0205 **TOSCA**



IMP0208 **MISTO**



IMP0211 **DOLPHIN**



IMP0206 **CHENIN**



IMP0209 **OCHRE**



IMP0212 **ALTO**



IMP0214 **FRAMBOISE**



IMP0217 **VERMILION**



IMP0220 **BUTTERNUT**



IMP0215 **WATERMELON**



IMP0218 **TANGO**



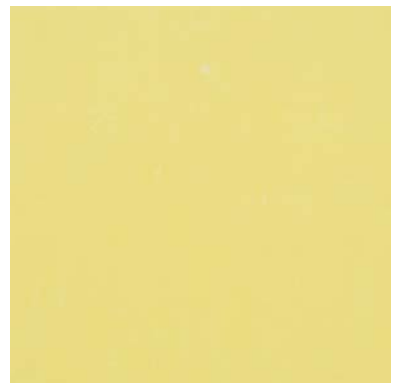
IMP0221 **MIMOSA**



IMP0216 **KOBİ**



IMP0219 **TACAO**



IMP0222 **JONQUIL**



IMPO223 **RABE**



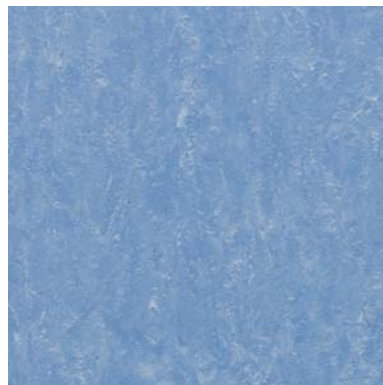
IMPO226 **INDIGO**



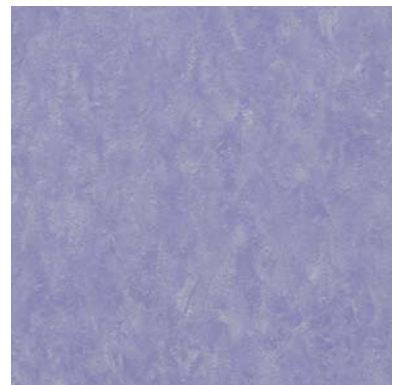
IMPO229 **DELFT**



IMPO224 **KIWI**



IMPO227 **BLUE IRIS**



IMPO230 **LAVENDER**



IMPO225 **SAGUARO**



IMPO228 **LIGHT CERULEAN**



IMPO231 **ORCHID**



IMPO201 **NAVAJO**



IMPO202 **KHAKI**



IMPO203 **IVORY**



IMPO213 **WHITE**

• Construction



3mm homogeneous tile with uniform patterning from top to bottom makes LG Floors IMPRESSION™ very durable and easy to maintain.

• Application

LG FLOORS IMPRESSION™ is a natural for education, retail stores, hospitality and healthcare.

• Product Specifications

• Reference Specification

ASTM F 1066	Class II, Through Pattern Tile Type A: Smooth Surface
-------------	--

• Physical Data

ASTM F 536 - Size	Nominal 18" X 18" - 17.72in. X 17.72 in. Actual - 450mm X 450mm
ASTM F 386 - Overall Thickness	0.125 in. (3.0mm)
ASTM D 2047 - Slip Resistance	Exceeds ADA and OSHA recommendations
ASTM F 970 - Residual Indentation	Passes
ASTM F 1514 - Resistance to Heat	Passes
ASTM F 925 - Resistance to Chemicals	Passes

• Fire Test Data

ASTM E 648 Critical Radiant Flux:	> 0.97 watts / cm ² , NFPA Class I
ASTM E662 Smoke Density	< 450 - "Passes"

• Environmental Data

Indoor Air Quality	FLOORSCORE™ Certified
Other environmental attributes	ISO 14001 - Environmental Manufacturing Standard LG Chem Responsible Care - Global Commitment and Initiative



ARTWALK™
Commercial Resilient Sheet

Trendy Design
Genuine Feel
Unique Metal Effects

For a high-tech look and feel, ARTWALK™ is the perfect choice. Taking the metallic look to a new level, ARTWALK™ Metal brings 3D visuals into your design.

The Metal Collection re-creates the look of steel treadplate for a fraction of the cost of the real thing.

Perfectly replicating anodized stainless-steel and metallic brush-finished steel, ARTWALK™ is the logical choice where a high-tech or futuristic look is desired.

ARTWALK™ is perfect for retail stores, hospitality, and transportation. The outstanding strength and durability of this resilient sheet flooring ensures high-performance.

Tough, beautiful, easy to install and maintain, ARTWALK™ is the ideal flooring solution for any commercial flooring application.





Retail



Hospitality



Transportation

ARTWALK™

Commercial Resilient Sheet

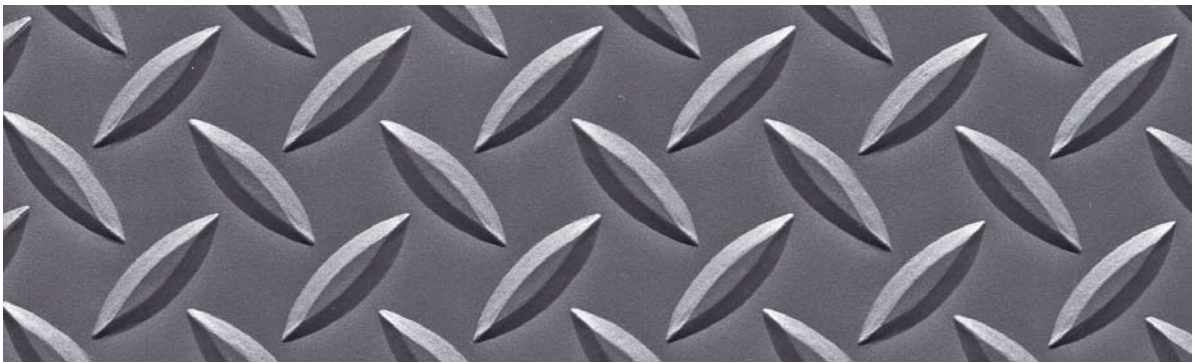
- **Designed in America** to meet the color requirements of busy designers.
- Exclusive “Embossed in Register (EIR)”, surface design with outstanding realism and rich textures, like those found in today’s real wood floors.
- Heavy 3.2 mm gauge offers outstanding strength and performance.
- Durable and safe surface for use in retail stores, hospitality, transportation, stairwells, and industrial vehicles.
- Convenient 2-meter (6’7”), wide rolls are easy to handle and install easily in stairwells.
- Exceeds the standards for slip resistance set by OSHA and the ADA.
- Approved for use as a safety floor.



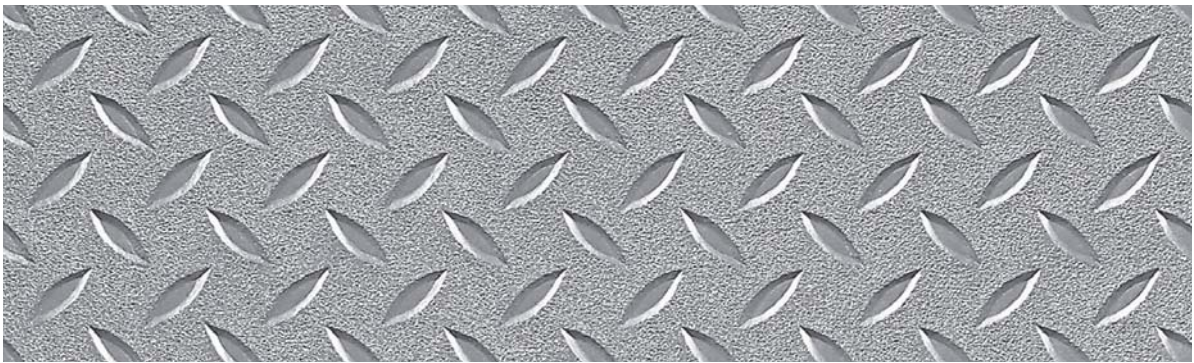
LG FLOORS



SD120 **SILVER**



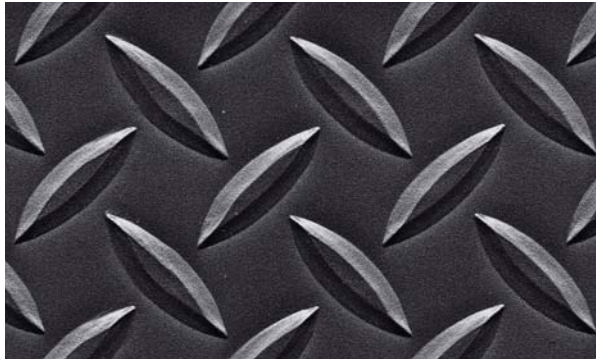
SD133 **MIDNIGHT BLUE**



SD263 **BRUSHED CHROME**



SD264 **BRUSHED PLATINUM**



SD183 CHARCOAL



SD180 BLACK

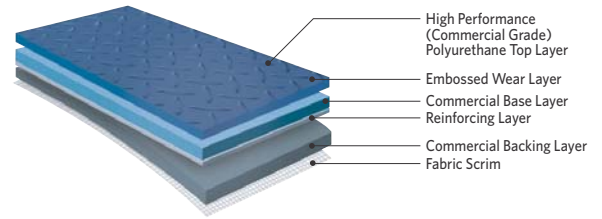


SD273 BRUSHED GOLD



SD233 BRUSHED INDIGO

• Construction

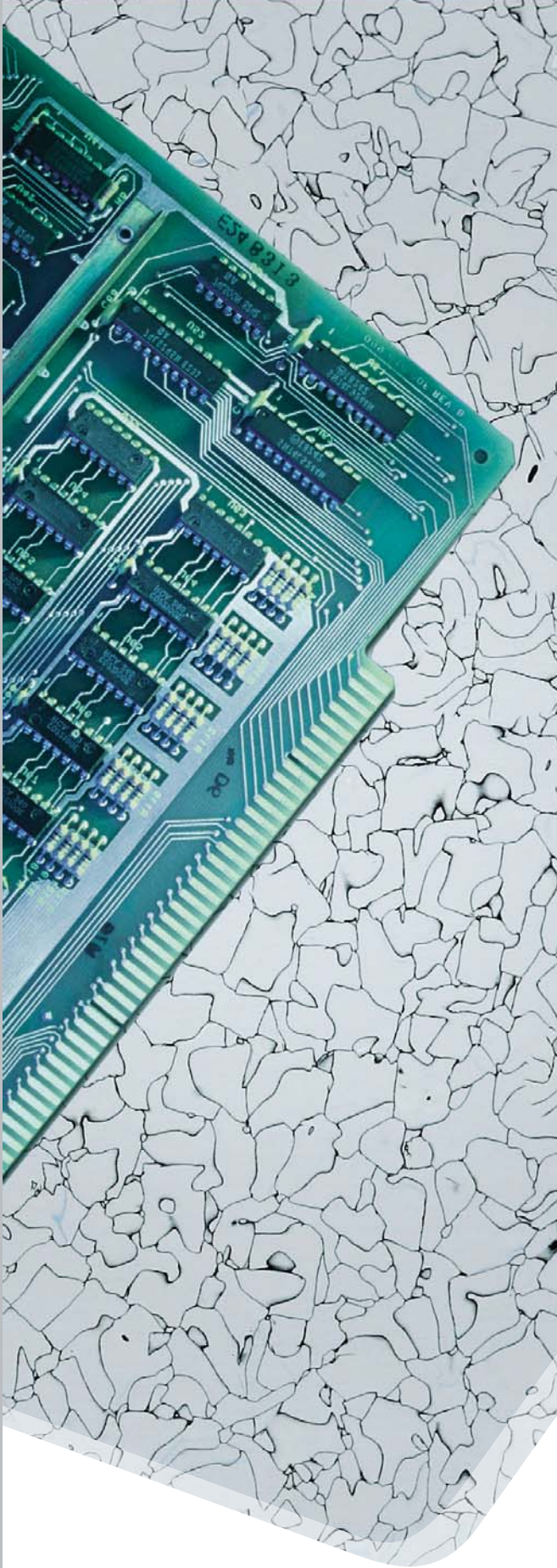


• Product Specifications

• Reference Specification	
ASTM 1303	Type I, Grade 1
• Physical Data	
Roll Size	Nominal - 78.74 inch width X 49.2 feet length Actual - 2 meter width X 15 meter length
Weight	6.94 lbs/ yd ² , (3.77 kg./m ²)
Backing Class	Class A, PVC with fabric mesh
• Physical Characteristics	
ASTM F386 - Total Thickness	0.126 (3.2mm)
ASTM F410 - Wear Layer Thickness	0.040 (1.0mm)
ASTM D2047 - Slip Resistance	Exceeds the recommendations of OSHA and the ADA
ASTM 970 - Residual Indentation	Passes
ASTM F137 - Flexibility	Passes
ASTM F1514 - Resistance to Heat	Passes
ASTM F1515 - Resistance to Light	Passes
ASTM F 925 - Resistance to Chemicals	Passes
• Fire Test Data	
ASTM E 648 Critical Radiant Flux:	> 0.45 watts / cm ² , NFPA Class I
ASTM E662 Smoke Density	< 450 - Passes

• Environmental Data

Recycled Content	- 14% Post Consumer - 15% Post Industrial
Indoor Air Quality	- FloorScore™ Certified
LEED Scorecard	Artwalk™ will contribute value to a building's LEED Scorecard in the following categories recognized by the USGBC: - LEED NC 2.2 & CI 2.0 Rating System - LEED EB 2.0 Rating System - LEED Schools, NC & Major Renovations Rating System - LEED Retail - NC & Major Renovations Rating System - DRAFT You may obtain further information about LG Floors LEED rating values by visiting www.lgfloors-usa.com
Other environmental attributes	- ISO 14001 - Environmental Manufacturing Standard - LG Chem Responsible Care - Global Commitment and Initiative - Innovative Post Consumer Recycling Program - Resilient Sheet Flooring.



STATICPULSE™
ESD Control Vinyl Tile

Consistent & Stable conductivity Superior Stain-Resistance

STATICPULSE™ ESD Control Vinyl Tile is the ultimate solution to today's technological environments where static electricity is more than the annoying nuisance of a simple shock.

Electrostatic discharges can damage or degrade sensitive electronic components, ignite flammable gases, and cause equipment malfunction.

STATICPULSE™ ESD solves this problem protecting your valuable equipment while still giving the looks and performance you've come to expect from LG.

APPLICATIONS

■ Clean Rooms

STATICPULSE™ ESD Control Vinyl Tile meets requirements in clean rooms as strict as class 10 based on its high-tech know-how by over 700 research and manufacturing staff. It has no free carbon to contaminate the clean room, and low outgassing emissions and is independent of room temperature and humidity. It is highly suitable for special clean room maintenance techniques, Semiconductor, Microelectronics, Optics, Aerospace, Pharmaceuticals, Biotechnology, etc.

■ Access Flooring

STATICPULSE™ ESD Control Vinyl Tile is suitable for use on access flooring. It can easily be perforated without risk of rough edges or the tile cracking or breaking.

Major manufacturers of raised or access flooring are experienced in the use of STATICPULSE™ ESD Control Vinyl Tile.

Healthcare

STATICPULSE™ ESD Control Vinyl Tile removes static discharge to prevent data errors that may occur with high-tech visual medical equipment such as CT SCAN, MRI, or other sensitive equipment.

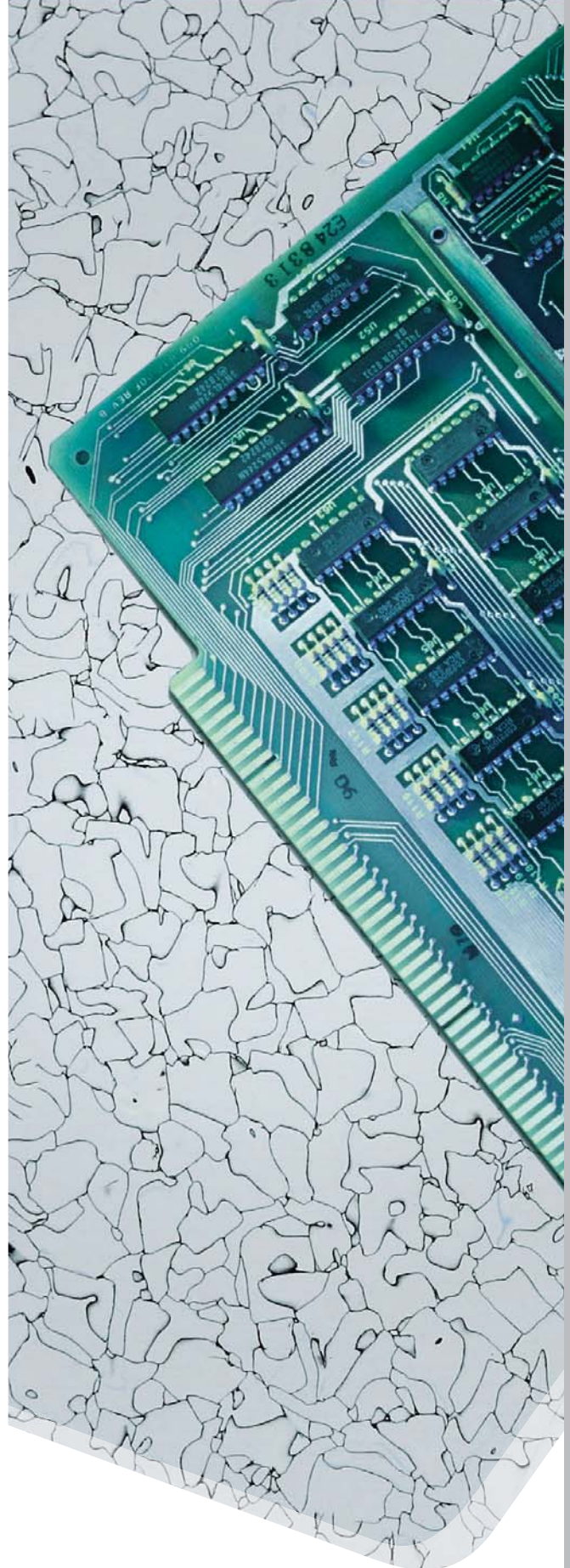
Electronics Manufacturing Assembly, Test Areas

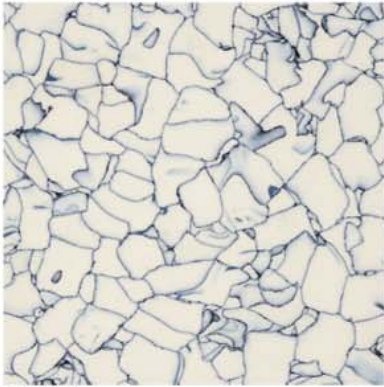
STATICPULSE™ ESD Control Vinyl Tile is a permanently installed material that helps protect sensitive electronic devices, assemblies, and products from personnel-generated electrostatic discharge.

Computer and Electronic Equipment and Telecommunications Environments

STATICPULSE™ ESD Control Vinyl Tile controls static discharges into computer terminals and other sensitive electronic equipment, thus preventing damage to internal circuitry, incorrect entries or retrieval, loss of computer memory or other malfunction.

It protects large data processing facilities, computerized typesetting and drafting equipment, process control equipment, communications installations, and other static sensitive equipment and instruments.

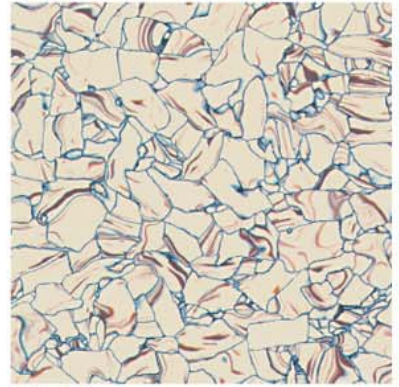




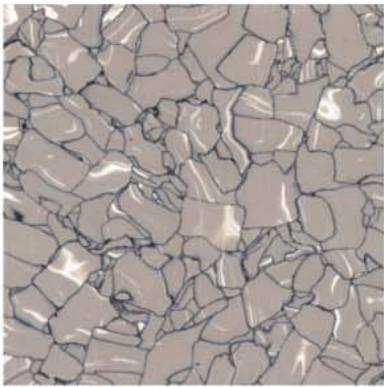
C6001



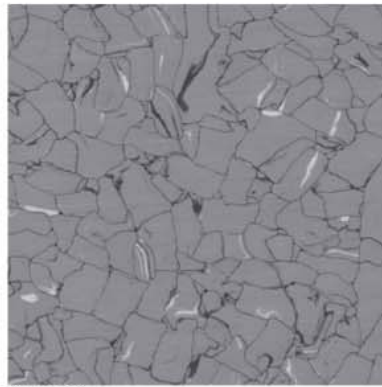
C6003



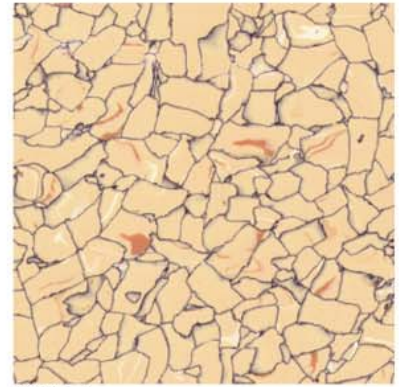
C6004



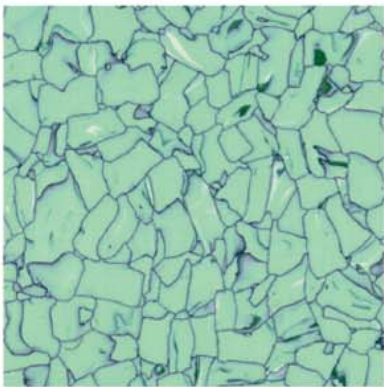
C6005



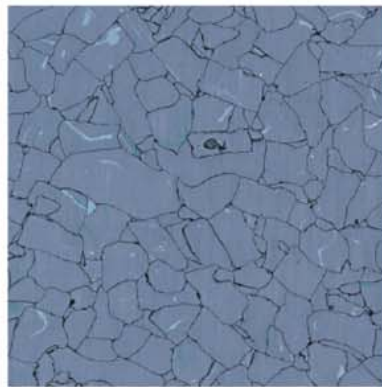
C6061



C6071



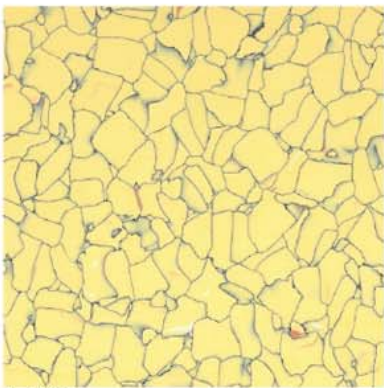
C6081



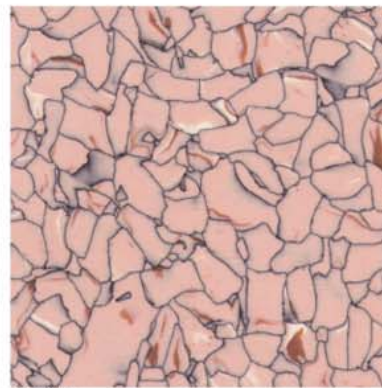
C6091



C6111



C6121



C6131



C6141

• Construction



1/8" homogeneous tile with uniform patterning from top to bottom makes LG Floors' STATICPULSE™ very durable and easy to maintain.



C6101

• Physical Data

ITEM	Standard test Method	ASTM Spec	Conductive Tile	Static Dissipative Tile
Electrical / Electrostatic Properties				
Electrical Resistance	ESD S 7.1 (100V)	$2.5 \times 10^4 - 10^6 \Omega$	$2.5 \times 10^4 - 10^6$	$10^4 - 10^9$
-Surface to Surface	ASTM F-150 (100V) NFPA 99 (500V)	$2.5 \times 10^4 - 10^6 \Omega$	$2.5 \times 10^4 - 10^6$	$10^4 - 10^9$ (SD : $10^4 - 10^9$)
-Surface to Ground	DIN 51953 (500V)	$< 2.5 \times 10^4 - 10^6 \Omega$	$< 2.5 \times 10^4 - 10^6 \Omega$	$10^4 - 10^9$
Electrostatic Propensity (=Static Generation)	ESD STM 97.2	N/A	Less than 20 volts	Less than 20 volts
Static Decay	Federal Test Method 101B Method 4046 at 15% Relative Humidity	< 0.5 sec	0.01 sec	0.01 sec
Other Properties				
CEN Classification	DIN EN 685			Class 34 + 43
Composition of Material	ASTM F 1700, Certificate of Compliance			Homogeneous
Thickness	ASTM F 386, DIN EN 428	as specified ± 0.005 in (0.13mm)		1/8", 2mm
Nominal Sizes	ASTM F 536, DIN EN 427	± 0.01 in./lin. Ft (0.4 mm/304.8mm)		12 x 12", 24 x 24", 36 x 36"
Squareness	ASTM F 540	maximum 0.010 in. (0.25 mm)		$< 0.010^\circ$
Residual Indentation	ASTM F1914 DIN EN 433	average less than 8% max. single reading 10%		$< 7\%$
Flexibility	ASTM F 137	no crack or break		No crack or break
Dimensional Stability	ASTM Fed. Std. No. 501a, Method 6211, DIN EN 434	< 0.020 "/ft (0.51 mm/304.8 mm)		< 0.015 "/ft
Resistance to Chemicals	ASTM F 925 DIN EN 423	No more than a slight change in surface dulling, surface attack, or staining		No more than a slight change in surface dulling, surface attack, or staining
Resistance to Heat	ASTM F 1514	$\Delta E < 8$ ave., max		$< \Delta E = 2.0$
Resistance to Light	ASTM F 1515	$\Delta E < 8$ ave., max		$< \Delta E = 2.0$
Static Load Limit	Modified ASTM F 970-00			2,500 psi
Smoke Density	ASTM E 662	< 450		< 450
Flame Spread	ASTM E 84, NFPA 225	< 75		< 75
Fire Resistance	DIN 4102			B1
Critical Radiant Flux	ASTM F 648, NFPA 253			> 1.08 W/cm ² (class I Interior Floor Finish, NFPA Life Safety Code 101)
Abrasion Resistance	ASTM D 1044, CS-10-F Wheel, 500Gm Weight			Cycle % Gauge Loss 10,000 1.60
Resistance to Wear	DIN EN 660-1			M
Effect of Castor Chair	DIN EN 425			No damage
Color Fastness	ISO 105 B02			At least 6
Standard to Health	NFPA 99			Confirms to the requirement
Care Facilities				of NFPA 99 in effect at the time of installation
Fulfills product requirements	DIN EN 649			Yes
Underwriters Laboratories	UL 779			Meets UL Standard

LG FLOORS RESILIENT FLOORING ADHESIVES - ENVIRONMENTAL PERFORMANCE :

The LEED Rating System references the South Coast Air Quality Management District's (SCAQMD) rule # 1168 for VOC thresholds of adhesives and sealant.

The following are the LEED rating systems that reference this standard:

- LEED for New Construction and Major Renovations - Materials and Resources, credit 4.1
- LEED for Commercial Interiors - Materials and Resources, credit 4.1
- LEED for Existing Buildings - Materials and Resources, credit 3.1(A)
- LEED for Schools - Indoor Environmental Quality, credit 4, option 1
- LEED for Retail (Pilot) - Indoor Environmental Quality, credit 4, option 1

The SCAQMD measures VOC in grams per liter. The threshold for resilient flooring adhesives is 50 grams/liter less water. On behalf of LG Floors, we are proud to say that not only do we comply with these regulations but perform at an optimum level.

The following is the recorded output for LG Floors adhesives:

- LG-2100 = 0 VOC
- LG-3100 = <12 grams/liter
- LG-5100 = <12 grams/liter
- LG-5500 = <12 grams/liter

LG FLOORS ADHESIVES:

- Environmentally Preferred
- Solvent-Free
- Non-hazardous
- Antimicrobial Protection
- Odorless when dry
- Passes SCAQMD #1168
- Excellent plasticizer resistance
- Non-staining
- Excellent aged bond
- Excellent water resistance

ADHESIVE 2100 - Permanent Acrylic | Spread Rate - 165 SF/GAL

LG Floors 2100 - Solvent Free Vinyl Tile and Sheet Adhesive is a premium (non-staining), hard setting acrylic adhesive designed to permanently install LG Floors resilient sheet, tile, and plank floors. LG Floors 2100 is for use on all grades of concrete on, above or below, in the absence of moisture, as well as on approved wood floors. It is recommended for use in healthcare facilities, grocery stores and spaces with heavy commercial traffic and rolling loads that would not normally require an epoxy adhesive. LG Floors 2100 is also for applications over existing, non-cushioned resilient flooring. This adhesive is non-flammable, water and alkali resistant and freeze-thaw stable. Use LG Floors recommended trowel notch size. Cleans up with soap and water when wet, mineral spirits when dry. Always follow directions on the adhesive label.



ADHESIVE 3100 - 2 Part Epoxy | Spread Rate - 150 SF/GAL

LG Floors 3100 - Solvent-free 2-part epoxy adhesive specifically formulated for the installation LG Floors vinyl flooring coverings over porous and non-porous surfaces. LG Floors recommends LG Floors 3100 for floors where heavy commercial traffic, heavy rolling loads, heavy point loads or occasional topical moisture may be experienced. It is recommended for use in hospital rooms, refrigeration areas, and spaces with very heavy commercial traffic and industrial rolling loads. This adhesive is non-flammable, water and alkali resistant and freeze-thaw stable. Cleans up with alcohol while wet. Use LG Floors recommended trowel notch size. Always follow directions on the adhesive label.



ADHESIVE 5100 - Static Dissipative Acrylic | Spread Rate - 165 SF/GAL

LG Floors 5100 - Solvent Free Static Dissipative Floor Covering Adhesive. LG Floors 5100 is a premium acrylic adhesive, designed to permanently install dimensionally stable Static Dissipative commercial grade PVC sheet flooring or Static Dissipative Vinyl Tile. LG Floors 5100 is for use on all grades of concrete 2/M- on, above or below 2/M-, in the absence of moisture, as well as on approved wood floors. This adhesive is non-flammable, water and alkali resistant and freeze-thaw stable. LG Floors 5100 has excellent resistance to plasticizer migration and sets to a tough permanent bond. LG Floors 5100 is medium gray in color and cleans up easily with soap and water when wet and mineral spirits when dry. Use LG Floors recommended trowel notch size. Always follow directions on the adhesive label.



ADHESIVE 5500 - ESD Epoxy | Spread Rate - 165 SF/GAL

LG Floors 5500 - Solvent-free 2-part hard-setting epoxy conductive adhesive specifically formulated for the installation LG Floors ESD floor tiles over porous and non-porous surfaces. LG Floors 5500 is for use on all grades of concrete 2/M- on, above or below 2/M-, in the absence of moisture, as well as on approved wood floors. LG Floors 5500 is for floors where heavy commercial traffic, heavy rolling loads, heavy point loads or occasional topical moisture may be experienced. Cleans up with alcohol while wet. Use LG Floors recommended trowel notch size. Always follow directions on the adhesive label.



LG FLOORS RESILIENT SHEET - SEAMING SYSTEMS

LG Weld Rod - LG Floors recommends and prefers LG Floors' Weld-Rod exclusively for heat-welding seams in LG Floors NatureLife commercial resilient sheet flooring. LG Floors Weld-Rod is available in a series of colors, directly coordinated to LG Floors' running line sheet flooring products. LG Floors weld rod is manufactured in a 4mm gauge. Please use the correct welding tip to heat-weld seams. Test welding on a scrap piece of flooring is recommended prior to actual seam welding. Each roll contains 180 linear feet of weld rod. Please follow directions found in the current LG Floors Installation Guide, which may be found at www.lgfloors-usa.com.

LG Floors' Chemical-Weld Seam Sealer - LG Floors' Chemical-Weld Seam Sealer is for cold-welding seams in LG Floors commercial resilient sheet flooring. LG Floors Chemical-Weld Seam Sealer is available in kits including adhesive and plastic applicator bottles. Each kit contains two 25 gram bottles of seam sealer and 1 plastic applicator bottle. Two 25 gram bottles of seam sealer will fill one plastic applicator bottle and cover 47 linear feet of seam. LG Floors' Chemical-Weld Seam Sealer is recommended for use with Artwalk Metal commercial sheet. Special shipping and handling is required for this product. Please follow directions found in the current LG Floors Installation Guide at www.lgfloors-usa.com.



TROWEL REPLACEMENT BLADE

LG Floors ships a free trowel replacement blade with every bucket of Adhesives. Always replace worn trowel blades.



LG FLOORS PRODUCT DATA SHEET

Item	Gauge	Size	Pieces / Unit
SHEET VINYL			
NatureLife w/ PU	0.086" (2.2mm)	6'(1.83M) X 75 lin ft (150SY)	1
Weld Rod	0.157" (4mm)	0.157" (4mm) X 180 ft	1
Artwalk Metal w/ PU	0.126" (3.2mm)	78.74"(2M) X 49.2' (36SY)	1
TILE & PLANK			
Deco Wood .5 w/ PU	0.125" (3.0mm)	4" X 36" (100mm X 920mm)	36
Deco Wood ENDGRAIN	0.125" (3.0mm)	17.72" X 17.72" (450mm X 450mm)	16
Deco Stone .5 w/ PU	0.125" (3.0mm)	17.72" X 17.72" (450mm X 450mm)	16
ESD TILE			
StaticPulse	1/8" (3.18mm)	12" x 12"	45
EVT			
Impression (Main Colors)	0.125" (3.0mm)	17.72" X 17.72" (450mm X 450mm)	16
Impression (Medium Colors)	0.125" (3.0mm)	17.72" X 17.72" (450mm X 450mm)	16
Impression (Accent Colors)	0.125" (3.0mm)	17.72" X 17.72" (450mm X 450mm)	16

NOTES:

StaticPulse Accent Colors : C6141, C6061, C6091, C6081, C6121, C6131, C6071
may require different MOQ (Minimum Order Quantity)

Impression color grouping

-Main Color (10) : IMPO205, IMPO206, IMPO208, IMPO209, IMPO211, IMPO212, IMPO201, IMPO202, IMPO203, IMPO213

-Medium Color (6) : IMPO204, IMPO207, IMPO210, IMPO255, IMPO228, IMPO231

-Accent Color (15) : IMPO214, IMPO215, IMPO216, IMPO217, IMPO218, IMPO219, IMPO220, IMPO221, IMPO222, IMPO223, IMPO224, IMPO226, IMPO227, IMPO229, IMPO230

Weight Limit is 34,000 lbs for 20ft. container and 44,000 lbs for 40ft. container.

StaticPulse MOQ should be as follows :

2.0 X 24" X 24" : 6 pallets = 264 cartons = 15,840 square feet

1/8" (3.18mm) X 24" X 24" : 6 pallets = 264 cartons = 10,560 square feet

	Unit	Unit Conversion		Pallet Quantity		20FT Container Quantity			Minimum Order Quantity	
		SQF/SQY	UNIT	R or C	QTY	PLT	R or C	QTY		
	Roll	50 SY	Roll	9 ROLLS	450 SY	10	105 ROLLS	5,250 SY	1650 SY	33 ROLLS
	Roll	180 LF	Roll	N/A	N/A	N/A	N/A	N/A	N/A	N/A
	Roll	36 SY	Roll	12 ROLLS	432 SY	12	144 ROLLS	5,184 SY	1296 SY	36 ROLLS
	Carton	35.65 SF	Carton	48 CTNS	1711 SF	18	864 CTNS	30,802 SF	3,422 SF	96 CTNS
	Carton	34.88 SF	Carton	52 CTNS	1814 SF	18	936 CTNS	32,648 SF	3,628 SF	104 CTNS
	Carton	34.88 SF	Carton	52 CTNS	1814 SF	18	936 CTNS	32,648 SF	3,628 SF	104 CTNS
	Carton	45.00 SF	Carton	45 CTNS	2025 SF	16	720 CTNS	32,400 SF	12,150 SF	270 CTNS
	Carton	34.88 SF	Carton	48 CTNS	1674 SF	18	864 CTNS	30,136 SF	13,394 SF	384 CTNS
	Carton	34.88 SF	Carton	48 CTNS	1674 SF	18	864 CTNS	30,136 SF	6,697 SF	192 CTNS
	Carton	34.88 SF	Carton	48 CTNS	1674 SF	18	864 CTNS	30,136 SF	3,348 SF	96 CTNS

LG FLOORS FAST FACTS

INSTALLATION & MAINTENANCE

NOTICE: To obtain the most up-to-date versions of LG Floors product specifications, installation and maintenance recommendations and warranty, please visit: www.lgfloors-usa.com.

1) Job Site Conditions - These conditions apply to all products:

- a) The building's permanent HVAC system must be on and maintained consistently at a range of 65° - 85° F, (20° - 29° C) for at least 5 days.
- b) All flooring materials and adhesives should be acclimated to the jobsite conditions for a minimum of 48 hours prior to beginning the installation. Store and secure all rolls standing upright. Store cartons flat and squarely on top of one another, not on edge.
- c) Visually inspect all material before installation. Contact LG Floors Customer Service Department immediately if any problems exist. Any material installed with visual defects may not qualify as a valid claim.

2) Floor Prep - These conditions apply equally to all products:

- a) Substrates shall be permanently dry, clean, smooth, and structurally sound. They shall be free of dust, solvent, paint, wax, oil, grease, residual adhesive, adhesive removers, curing, sealing, hardening, or parting compounds, alkaline salts, excessive carbonation, or laitance, mold, mildew, and other foreign material that might prevent adhesive bond.
- b) Curing compounds (DO NOT USE). If present, compound must be removed.
- c) It is imperative that moisture testing occur in advance of any installation of any LG Floors product on all concrete slabs, no matter the type, age or grade level of the concrete. Testing should be performed according to ASTM F 1869 Calcium Chloride Moisture Emission Test, (with maximum emission levels of 5 lbs moisture/1000 sq. ft./24 hours), or ASTM F-2170 In-Situ Relative Humidity Test, (with a maximum relative humidity of 75%). ASTM F-2170 In-Situ Relative Humidity Test is the only test accepted for all "light weight concrete" floors. Documented moisture test results are required for LG Floors warranty.
- d) Test concrete surface for pH, pH must not exceed 10. Documented pH test results are required for LG Floors warranty.
- e) Use only Portland-based cement patching and leveling compounds. Do not install LG Floors resilient flooring over gypsum based patching and/or leveling compounds.
- f) Responsibility for the suitability of the substrate rests solely with the installer on the job site.

3) LG Floors Adhesives:

- a) You must use LG Floors adhesive with LG Floors products for LG Floors warranty to be valid.
- b) LG Floors 2100 - solvent-free hard-setting permanent acrylic adhesive for installing heterogeneous sheet and LVT products.
- c) LG Floors 3100 - solvent-free two-part epoxy for areas exposed to topical water, heavy rolling loads, and under hospital beds.
- d) LG Floors 5100 - solvent-free, static dissipative premium acrylic flooring adhesive designed to install static dissipative commercial grade PVC flooring.
- e) LG Floors 5500 - solvent-free, 2-part hard-setting epoxy conductive adhesive specifically formulated for the installation of LG Chem ESD floor tiles over porous and non-porous surfaces.
- f) LG Floors supplies new trowel blades with every order

4) Installing Resilient Sheet Products:

- a) Heat welding is the preferred seaming procedure for commercial installations.
- b) LG Floors recommends chemical welding for 'Artwalk Metal'.
- c) Chemical welding is optional for LG Floors sheet products in low traffic areas.
- d) Avoid all foot traffic for 12 hours after installation.
- e) Avoid rolling load traffic for at least 72 hours. If rolling loads cannot be avoided, protect the new flooring with wood panels.

5) Installing Resilient Tile & Plank Products:

- a) Install LG Floors tile & plank using conventional tile installation techniques. Make sure you will have at least a half of a tile at all borders.
- b) Install tiles running in same direction (arrows are on back of tile).
- c) Avoid all foot traffic for 12 hours after installation.
- d) Avoid rolling load traffic for at least 72 hours. If rolling loads cannot be avoided, protect the new flooring with wood panels.

6) Maintenance:

Note: LG Floors products do not always require a floor finish. However, in certain applications a floor finish may be desirable to aid in stain resistance, resistance to abrasion or increase gloss level.

Note: For LG STATICPULSE™ ESD Control Tile, DO NOT APPLY ANY FINISH.

New Floor:

- Do not begin wet maintenance for at least 4 or 5 days after installation is complete.
- Damp mopping is allowed after 12 hours.

Regular Maintenance

Best Practice:

- Remove surface soil, dirt, sand and grit by vacuuming or dust mopping.
- Before selecting an Option, determine what the visual expectations are, e.g. Shiny, Medium, or Matte finish.

Option 1 - No Wax & No Buff Methods (Matte Finish)

- *Damp Mop:* Clean floor with a neutral pH detergent such as Johnson Diversey 'Stride', Taski 'R-50' or equivalent. Follow manufacturer's directions for mixing and using.

And/Or

- *Machine (Auto Scrubber):* If desired, scrub with a rotary scrubber using a 3M red type scrubbing pad or automatic scrubber with equivalent scrubbing pads or brushes.

Option 2 - Floor Finish (Shiny or Matte)

- Apply 2-3 coats of high quality floor finish such as Johnson Diversey's 'Carefree' or Taski's 'Vision Matte', or equivalent. Apply with a clean finish mop or finish applicator. Follow finish manufacturer's instructions.
- Allow each coat to dry completely before applying the next coat.
- * Spray Buffing in lieu of Option 2 is acceptable and will leave a slight luster on the floor.

Consult LG Floors web site www.lgfloors-usa.com for complete maintenance instructions.

7) Warranty:

- LG Floors warrants its heterogeneous sheet, heterogeneous tile, homogeneous tile, ESD tile and welding rods to be free from manufacturing defects for five years from the date of purchase.
- LG Floors warrants its heterogeneous sheet, heterogeneous tile and homogeneous tile with a limited wear warranty.
- LG Floors warrants ESD Tile with a lifetime conductive warranty.
- Visit www.lgfloors-usa.com for LG Floors complete warranty, including limitations, exclusions and warranty qualification statements.

8) Workmanship:

- LG Floors does not warrant any installation workmanship. Please address all workmanship errors to the contractor who installed the floor.
- LG Floors recommends professional installation by contractors who have demonstrated expertise in installing resilient floors and have at least 5 years commercial project experience and references installing commercial resilient tile and sheet flooring.

9) Notes:

- Visit www.lgfloors-usa.com or call LG Floors Technical Support 1 888 543-5872, (LGFL-USA), for complete and current information:
 - Find detailed information on floor-prep and installation recommendations over concrete and other sub-floor types including wood, porous and non-porous surfaces.
 - Adhesive recommendations, including 2-part epoxy adhesives, ESD adhesives and others.
 - Review current maintenance recommendations.
 - See complete and current LG Floors written warranty.

Contact Information: LG Floors

920 Sylvan Ave.
Englewood Cliffs, NJ 07632
Ph: 888-543-5872 (LGFL-USA)
Fx: 201-408-1027

Web: www.lgfloors-usa.com
Email: support@lgfloors-usa.com
Samples: 888- 543-5872, (LGFL-USA), xt 1
Tech Support: 888-543-5872, (LGFL-USA), xt 2

LG FLOORS COMMERCIAL FLOOR WARRANTY

WARRANTY OWNER : This warranty extends only to the original end-user. LG warranties are non-transferable.
No installer, retailer, distributor or agent, or employee of LG may alter the obligations or limitations of any LG warranty.

PRODUCTS : LG warrants its vinyl sheet, tiles and welding rods to be free from manufacturing defects and offers a limited wear warranty on all products.

WORKMANSHIP : LG does not warrant installers' workmanship. Workmanship errors should be addressed to the contractor who installed the floor. Your LG commercial floor should be professionally installed by contractors who have demonstrated expertise in installing commercial floors.

For the most current warranty information, please visit www.lgfloors-usa.com

TERMS:

Within One Year : If a defect covered by this warranty is reported to LG in writing within one year of purchase, LG will supply new material of the same or similar grade sufficient to repair or replace the defective material. LG will pay all reasonable labor costs*.

Within Two Years : If a defect covered by this warranty is reported to LG in writing after one year but within two years of purchase, LG will supply new material of the same or similar grade sufficient to repair or replace the defective material. LG will pay fifty percent of reasonable labor costs*.

10 Year Warranty : If a defect covered by this warranty is reported to LG in writing after two years but within ten years of purchase, LG will supply new material of the same or similar grade sufficient to repair or replace the defective material. LG will not pay any labor costs. LG will not pay labor costs to repair or replace materials with defects that were apparent before or at the time of installation.

* reasonable labor costs shall be determined solely by LG.

EXCLUSIONS:

The following are not covered by this warranty:

- Improper installation and/or maintenance;
- Differences in color between products and samples or photographs;
- Problems arising from excessive moisture, alkali or water pressure from the sub floor;
- Indentation from improper loading including high heels, spiked shoes, rolling loads, chairs or other furniture not using floor protectors;
- Discoloration, including but not limited to U.V. light and heat sources;
- Surface scratches, changes in shading, texture and/or gloss during use;
- Damage caused by chemically reactive materials, carpet crocking, dye, mold, stains, spillage, burns, gouges, scratches, indentations, floods, accidents, abuse or any harsh scouring pads while buffing.
- Inappropriate end-user activities.
- Construction or installation-related damage.
- Damage caused by fire, flooding or intentional abuse.

LIMITATION ON DAMAGES:

LG excludes and shall not pay any incidental or consequential damages under this warranty. This shall include any liability for lost profits or any indirect, special or consequential damages. The remedies contained herein are the only remedies available for a breach of warranty of any kind.

NOTE: Some jurisdictions do not allow exclusion or limitations of incidental or consequential damages so the above limitations or exclusions may not apply to you.

THERE ARE NO OTHER WARRANTIES BEYOND THIS EXPRESS WARRANTY. ALL OTHER WARRANTIES, INCLUDING WARRANTIES OF MERCHANTABILITY OR FITNESS FOR A PARTICULAR PURPOSE, ARE EXCLUDED. NO IMPLIED WARRANTIES OF ANY KIND ARE PROVIDED. EXCEPT AS HEREIN EXPRESSLY STATED, THERE ARE NO WARRANTIES OR CONDITIONS, EXPRESS OR IMPLIED, BY OPERATION OF LAW OR OTHERWISE, FOR ANY BREACH OF CONTRACT, PRODUCTS LIABILITY, STRICT LIABILITY, NEGLIGENCE OR PART THEREOF FURNISHED HEREUNDER. THE PARTIES AGREE THAT THE IMPLIED WARRANTIES OF MERCHANTABILITY AND FITNESS FOR A PARTICULAR PURPOSE AND ALL OTHER WARRANTIES AND/OR GUARANTEES, EXPRESS OR IMPLIED, ARE EXCLUDED FROM THIS TRANSACTION AND SHALL NOT APPLY FOR THE CONTRACT PRODUCTS.

CONTACT: LG FLOORS 920 Sylvan Ave. Englewood Cliffs, NJ 07632 Ph: 1-888-LGFL.USA (888-543-5872) www.lgfloors-usa.com

version: 11272007 **(For the most current information, please visit www.lgfloors-usa.com)**

LG FLOORS STATICPULSE™ ESD TILE WARRANTY

WARRANTY OWNER : This warranty extends only to the original end-user. LG warranties are non-transferable.
No installer, retailer, distributor or agent, or employee of LG may alter the obligations or limitations of any LG warranty.

PRODUCT COVERED: LG Floors Static Pulse ESD Tile

WARRANTY: Subject to the provisions of this warranty, LG expressly warrants for a period of five (5) years from the date of purchase that LG Floors Static Pulse ESD Tile shall be free from material defects and workmanship. Subject to the provisions of this warranty, LG further expressly warrants that the ESD Conductive Tile will meet requirements of ASTM F-150 and ESD 7.1 in effect at the time of installation and that the Static Dissipative Tile will have an average resistance to ground of 1,000,000 - 100,000,000 Ω when measured according to ASTM F-150 or ESD 7.1.

INSTALLATION/WORKMANSHIP:

LG does not warrant installers' workmanship. Workmanship errors should be addressed to the contractor who installed the floor. Your LG ESD floor should be professionally installed by contractors who have demonstrated expertise in installing ESD floors. Your LG ESD floor must be installed correctly over a properly prepared sub-floor. Your LG ESD floor must regularly and properly maintained. No warranties contained herein shall apply unless the LG ESD floor is installed with LG or LG approved adhesive and such warranty contained herein shall be void if such products are removed from the site of their original installation.

EXCLUSIONS: The following are not covered by this warranty:

- Improper installation and/or maintenance;
- Workmanship of installation;
- Dissatisfaction problems or damage due to installation or maintenance other than as recommended by LG;
- Reduction in gloss from use;
- Problems arising from excessive moisture in or below the concrete slab which result in adhesion problems and/or surface defects (blistering or cracking) in any flooring material or delamination or surface defects due to hydrostatic pressure or moisture vapor transmission
- Damage due to accidents, gouges, scuffs, scratches, or indentations;
- Inappropriate end-user activities;
- Construction or installation-related damage;
- Damage caused by fire, flooding or intentional abuse;
- Dissatisfaction, problems or damage due to irregularities caused by subfloor.

LIMITATION ON DAMAGES:

LG excludes and shall not pay any incidental or consequential damages under this warranty. This shall include any liability for lost profits or any indirect, special or consequential damages. The remedies contained herein are the only remedies available for a breach of warranty of any kind. LG's sole obligation and Distributor's sole remedy for claims arising hereunder for any and all losses and damages resulting from any cause shall be that LG shall repair, at the option of LG, or replace the defective material. In no event, including in the case of a claim of negligence, shall LG be liable for incidental or consequential damages.

NOTE: Some jurisdictions do not allow exclusion or limitations of incidental or consequential damages so the above limitations or exclusions may not apply to you.

THERE ARE NO OTHER WARRANTIES BEYOND THIS EXPRESS WARRANTY. ALL OTHER WARRANTIES, INCLUDING WARRANTIES OF MERCHANTABILITY OR FITNESS FOR A PARTICULAR PURPOSE, ARE EXCLUDED. NO IMPLIED WARRANTIES OF ANY KIND ARE PROVIDED. EXCEPT AS HEREIN EXPRESSLY STATED, THERE ARE NO WARRANTIES OR CONDITIONS, EXPRESS OR IMPLIED, BY OPERATION OF LAW OR OTHERWISE, FOR ANY BREACH OF CONTRACT, PRODUCTS LIABILITY, STRICT LIABILITY, NEGLIGENCE OR PART THEREOF FURNISHED HEREUNDER. THE PARTIES AGREE THAT THE IMPLIED WARRANTIES OF MERCHANTABILITY AND FITNESS FOR A PARTICULAR PURPOSE AND ALL OTHER WARRANTIES AND/OR GUARANTEES, EXPRESS OR IMPLIED, ARE EXCLUDED FROM THIS TRANSACTION AND SHALL NOT APPLY FOR THE CONTRACT PRODUCTS.

CLAIMS: Any claim must be made within seven (7) days after purchaser learns of the facts upon which such claim is based. All claims not made in writing and received by LG within the time period specified above shall be deemed waived. Any claims for surface defects or variations in color must be communicated to LG in writing prior to the actual installation. If the product is already installed, then LG must examine and verify the defect.

CONTACT: LG FLOORS 920 Sylvan Ave., Englewood Cliffs, NJ 07632. Ph: 1.888.LGFL-USA (888.543.5872) Fax: 201.408.1027
www.lgfloors-usa.com.

version: 11272007 (For the most current information, please visit www.lgfloors-usa.com)

www.lgfloors-usa.com



LG FLOORS

920 Sylvan Ave., Englewood Cliffs, NJ 07632
Ph: 888-543-5872 (LGFL-USA) / Fax: 201-408-1027
Web: www.lgfloors-usa.com
Email: support@lgfloors-usa.com
Samples: 888- 543-5872, (LGFL-USA), xt 1
Tech Support: 888-543-5872, (LGFL-USA), xt 2